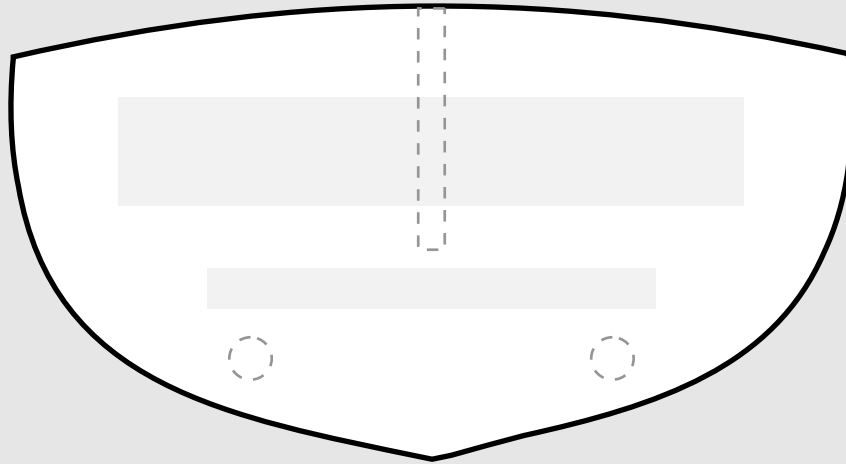
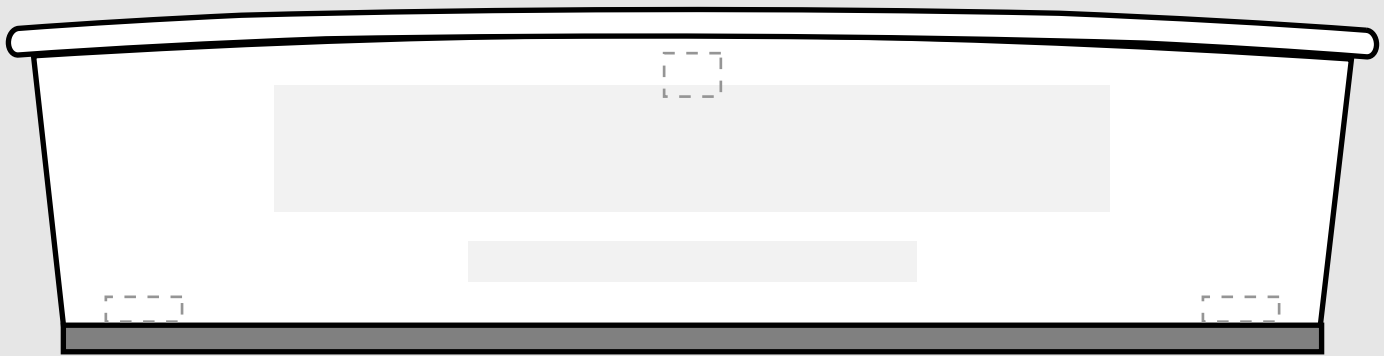


Boat Measuring Worksheet

Use this worksheet to write down the measurements of your boat's transom. Note the location of doors, thru-hulls, lights and ladders. Usually the best way to determine the size of lettering best suited for your boat is to measure outward from the center-line of the transom until you start running into hardware, ladders, or start running out of work space. Take note of that dimension and check how it works in the other direction. Multiply that dimension by 2 and you will have your lettering width.



Don't forget to take note of the colors on your boat!



For the best results, try not to worry too much about minor hardware, especially that which can be removed prior to installation and later replaced. It is almost always best to center the lettering on the transom rather than placing it off to one side just to avoid a small thru-hull or hardware.

Most sport fishers have a door on their transom and sometimes, it is almost impossible to avoid it when installing lettering. It is very common to place lettering over the door, as long as it is mostly flush with the transom. Try to avoid placing the lettering over both sides of the door, unless the door is centered on the transom.